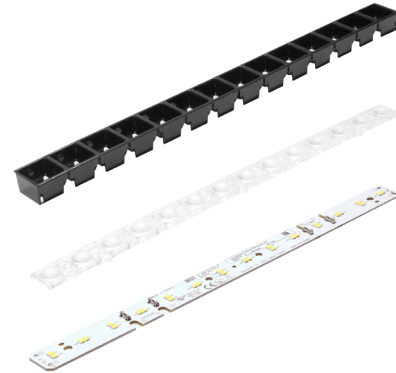


Linear LED modules 280x20mm DAISY-MINI

A linear solution for premium class indoor lighting. Optimized for LEDi's DAISY-MINI optics.

Product description

- Long life-time
- Built-in, constant current LED module
- Push-in terminals enabling easy connection
- Compliance and approval: CE
- Available CCT from 2700K to 6500K and CRI 80, 90



LinLED 2C CRI 80 G1

Product name	Ordering code	Colour temperature [K]	Current nominal If nom [mA]	Luminous flux* ϕ [lm]	Voltage* Vf [V]	Power* P [W]	Efficacy* [lm/W]	Current maximum If max [mA]
LinLED 280x20mm 2x550lm 827-865 2x2C 42V DAISY-MINI G1	1010 117 67946	2700	85	542	39	3.3	163	150
		6500	85	587	39	3.3	176	150
LinLED 280x20mm 1100lm 830 2C 42V DAISY-MINI G1	1010 117 68046	3000	165	1106	40	6.5	170	300
LinLED 280x20mm 1100lm 840 2C 42V DAISY-MINI G1	1010 117 68146	4000	165	1162	40	6.5	178	300

LinLED 2C CRI 90 G1

Product name	Ordering code	Colour temperature [K]	Current nominal If nom [mA]	Luminous flux* ϕ [lm]	Voltage* Vf [V]	Power* P [W]	Efficacy* [lm/W]	Current maximum If max [mA]
LinLED 280x20mm 2x550lm 927-965 2x2C 42V DAISY-MINI G1	1010 127 05146	2700	95	497	41	3.9	127	150
		6500	95	571	41	3.9	146	150
LinLED 280x20mm 1100lm 927 2C 42V DAISY-MINI G1	1010 117 97746	2700	190	995	41	7.8	127	300
LinLED 280x20mm 1100lm 930 2C 42V DAISY-MINI G1	1010 117 97846	3000	190	1069	41	7.8	136	300
LinLED 280x20mm 1100lm 940 2C 42V DAISY-MINI G1	1010 117 97946	4000	190	1142	41	7.8	146	300

LinLED 4C CRI 80 G1

Product name	Ordering code	Colour temperature [K]	Current nominal If nom [mA]	Luminous flux* ϕ [lm]	Voltage* Vf [V]	Power* P [W]	Efficacy* [lm/W]	Current maximum If max [mA]
LinLED 280x20mm 1100lm 830 4C 42V DAISY-MINI G1	1010 127 05646	3000	165	1106	40	6.5	170	300
LinLED 280x20mm 1100lm 840 4C 42V DAISY-MINI G1	1010 127 11646	4000	165	1162	40	6.5	178	300

LinLED 4C CRI 90 G1

Product name	Ordering code	Colour temperature [K]	Current nominal If nom [mA]	Luminous flux* ϕ [lm]	Voltage* Vf [V]	Power* P [W]	Efficacy* [lm/W]	Current maximum If max [mA]
LinLED 280x20mm 1100lm 927 4C 42V DAISY-MINI G1	1010 127 11746	2700	190	995	41	7.8	127	300
LinLED 280x20mm 1100lm 930 4C 42V DAISY-MINI G1	1010 127 05746	3000	190	1069	41	7.8	136	300
LinLED 280x20mm 1100lm 940 4C 42V DAISY-MINI G1	1010 127 11846	4000	190	1142	41	7.8	146	300

*At nominal current and T_p

Tolerance range for optical and electrical $\pm 10\%$

Linear LED modules 280x20mm DAISY-MINI

Temperature & humidity

Specification item	Unit	Value
Tp	[°C]	45
Tp rated	[°C]	65
Tc	[°C]	85
Relative humidity (non-condensing)	[%]	5 ... 85
Storage ambient temperature	[°C]	-25 ... +85
Storage relative humidity (non-condensing)	[%]	5 ... 85

Tp - Temperature related to the performance parameters of the LED modules

Tp rated - Maximum operating temperature to which the rated performance characteristics are declared

Tc - Highest permissible value for safe operation

Technical data

Specification item	Unit	Value
Classification acc. to IEC 62031		built-in
Energy Efficiency Class		A++
Working voltage		250
Beam angle	[deg]	120
Initial color consistency	[SDCM]	3
Initial color coordinates		Acc. to CIE 1931
Photobiological safety		RG1 unlimited

Certificates & standards

Specification item	Compliant
ENEC	No
CE	Yes
RoHS	Yes
REACH	Yes
Zhaga	No
IP rating	No IP rating

Lumen maintenance

LinLED CRI 80

Forward current	Tp temp.	L70 [h]		L80 [h]		L90 [h]	
		B50	B10	B50	B10	B50	B10
If nom	45°C	>72 000	>72 000	>72 000	>72 000	63 000	52 000
	55°C	>72 000	>72 000	>72 000	>72 000	63 000	52 000
	65°C	>72 000	>72 000	>72 000	>72 000	61 000	51 000
	75°C	>72 000	>72 000	>72 000	>72 000	59 000	50 000
	85°C	>72 000	>72 000	>72 000	>72 000	58 000	49 000
If max	45°C	>72 000	>72 000	>72 000	>72 000	51 000	39 000
	55°C	>72 000	>72 000	>72 000	>72 000	51 000	39 000
	65°C	>72 000	>72 000	>72 000	>72 000	48 000	37 000
	75°C	>72 000	>72 000	>72 000	>72 000	45 000	35 000
	85°C	>72 000	>72 000	>72 000	69 000	43 000	34 000

reported data based on LM80 LED data (@65mA 17000h / @160mA & 200mA 12000h)

LinLED CRI 90

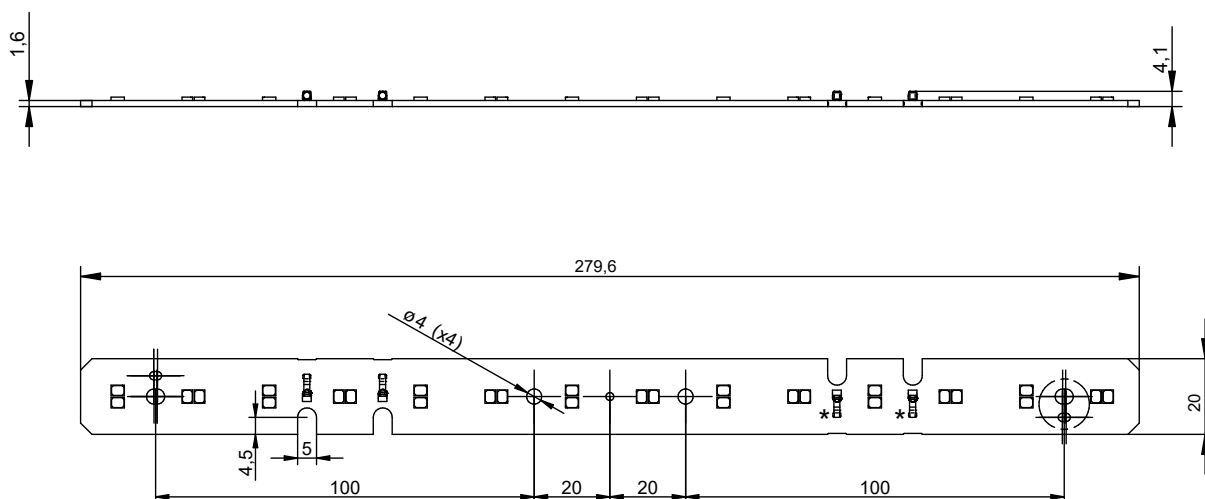
Forward current	Tp temp.	L70 [h]		L80 [h]		L90 [h]	
		B50	B10	B50	B10	B50	B10
If nom	45°C	>60 000	>60 000	>60 000	>60 000	54 000	52 000
	65°C	>60 000	>60 000	>60 000	>60 000	44 000	42 000
	85°C	>60 000	>60 000	>60 000	>60 000	35 000	31 000
If max	45°C	>60 000	>60 000	52 000	49 000	29 000	28 000
	65°C	>60 000	>60 000	47 000	44 000	25 000	24 000
	85°C	>60 000	58 000	41 000	38 000	22 000	19 000

reported data based on LM80 LED data 10 000h

Linear LED modules 280x20mm DAISY-MINI

Dimensions

Product name	Ordering code	Connectors (*)
LinLED 280x20mm 2x550lm 827-865 2x2C 42V DAISY-MINI G1	1010 117 67946	Yes
LinLED 280x20mm 1100lm 830 2C 42V DAISY-MINI G1	1010 117 68046	No
LinLED 280x20mm 1100lm 840 2C 42V DAISY-MINI G1	1010 117 68146	No
LinLED 280x20mm 2x550lm 927-965 2x2C 42V DAISY-MINI G1	1010 127 05146	Yes
LinLED 280x20mm 1100lm 927 2C 42V DAISY-MINI G1	1010 117 97746	No
LinLED 280x20mm 1100lm 930 2C 42V DAISY-MINI G1	1010 117 97846	No
LinLED 280x20mm 1100lm 940 2C 42V DAISY-MINI G1	1010 117 97946	No
LinLED 280x20mm 1100lm 830 4C 42V DAISY-MINI G1	1010 127 05646	Yes
LinLED 280x20mm 1100lm 840 4C 42V DAISY-MINI G1	1010 127 11646	Yes
LinLED 280x20mm 1100lm 927 4C 42V DAISY-MINI G1	1010 127 11746	Yes
LinLED 280x20mm 1100lm 930 4C 42V DAISY-MINI G1	1010 127 05746	Yes
LinLED 280x20mm 1100lm 940 4C 42V DAISY-MINI G1	1010 127 11846	Yes



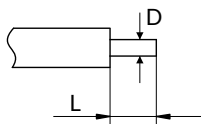
Mounting

LED Modules cannot be exposed to tensile or compressive stresses. For this purpose it is necessary that the modules are assembled to a flat surface by only rounded head screws. Additionally plastic flat washer should be used to ensure creepage distance between screw's head and surface of the pcb. Max. torque for fixing: 0,5Nm.

LED modules are sensitive to electrostatic discharge (ESD). Follow safety regulations according to IEC 61340-5-1.

Wiring

Wire cross section and strip length:



D - wire cross section (solid and flexible wires)	Min	Max
	0.2mm ²	0.5mm ²
	AWG 24	AWG 20

L - strip length	Min	Max
	5.2mm	5.8mm

Linear LED modules 280x20mm DAISY-MINI

Connections

Max number of modules

Unit

Series

Parallel

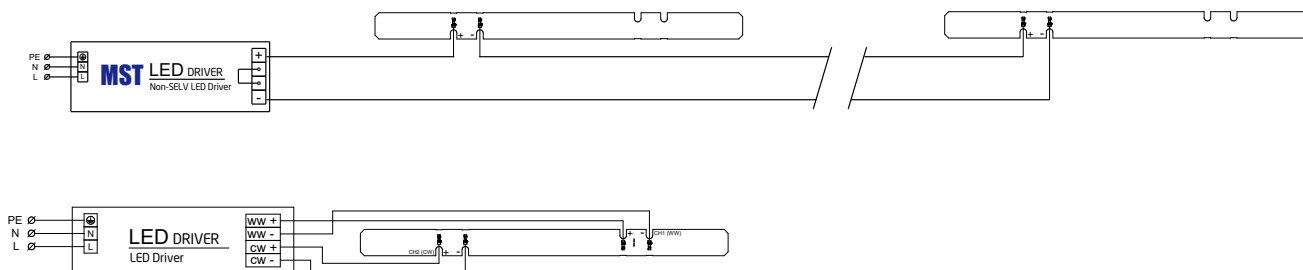
LinLED 280x20mm...

[pcs]

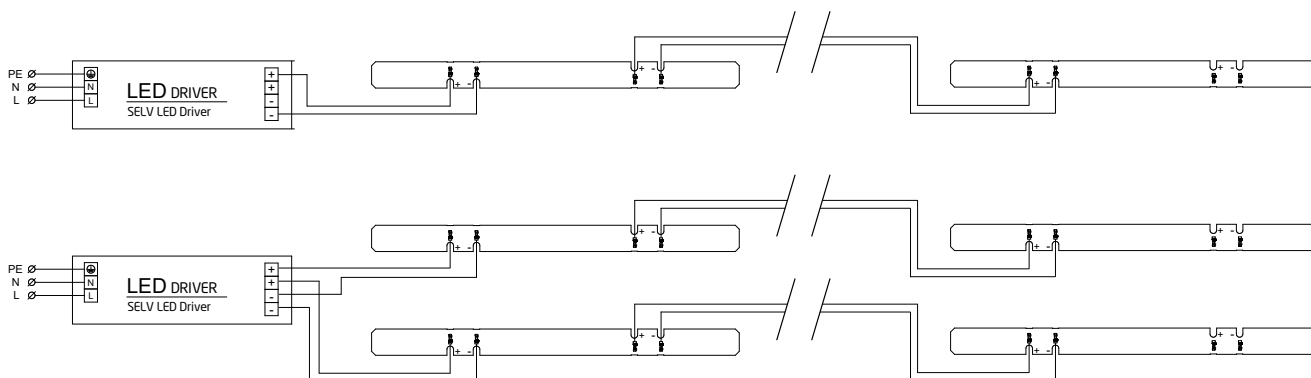
6

6

Wiring for parallel connection system (2C)



Wiring for parallel connection system (4C)



To prevent irregular luminous intensity in parallel connection use only LED modules from the same V-code group. V-code (e.g. "A", "B", "AB") is printed on the LED module and box label. Naming is not adequate to efficacy or luminous flux.

Ordering codes

Product name	Ordering code	Pieces per box	Pieces per pallet	Box dimensions [mm]
LinLED 280x20mm 2x550lm 827-865 2x2C 42V DAISY-MINI G1	1010 117 67946	187	20196	298 x 238 x 88
LinLED 280x20mm 1100lm 830 2C 42V DAISY-MINI G1	1010 117 68046	187	20196	298 x 238 x 88
LinLED 280x20mm 1100lm 840 2C 42V DAISY-MINI G1	1010 117 68146	187	20196	298 x 238 x 88
LinLED 280x20mm 2x550lm 927-965 2x2C 42V DAISY-MINI G1	1010 127 05146	187	20196	298 x 238 x 88
LinLED 280x20mm 1100lm 927 2C 42V DAISY-MINI G1	1010 117 97746	187	20196	298 x 238 x 88
LinLED 280x20mm 1100lm 930 2C 42V DAISY-MINI G1	1010 117 97846	187	20196	298 x 238 x 88
LinLED 280x20mm 1100lm 940 2C 42V DAISY-MINI G1	1010 117 97946	187	20196	298 x 238 x 88
LinLED 280x20mm 1100lm 830 4C 42V DAISY-MINI G1	1010 127 05646	187	20196	298 x 238 x 88
LinLED 280x20mm 1100lm 840 4C 42V DAISY-MINI G1	1010 127 11646	187	20196	298 x 238 x 88
LinLED 280x20mm 1100lm 927 4C 42V DAISY-MINI G1	1010 127 11746	187	20196	298 x 238 x 88
LinLED 280x20mm 1100lm 930 4C 42V DAISY-MINI G1	1010 127 05746	187	20196	298 x 238 x 88
LinLED 280x20mm 1100lm 940 4C 42V DAISY-MINI G1	1010 127 11846	187	20196	298 x 238 x 88